



Granite sea or Clapas in La Souche

Large field of granite stones at the foot of Mount Aigu mountain, on the North face. The clapas means a pile of rocky debris, the rocks gather together to form like a sea of granite. Accessible by hiking towards the Mont Aigu.



- 📍 Chemin des gardes - **La Souche**
- ☎ [04 75 37 90 11](tel:0475379011)
- ✉ contact@lasouche.fr
- 🌐 More information www.otsv.fr/63e633

Openings : Toute l'année. **Prices :** Accès libre.

Volcano : The Gravenne of Thueyts

Strombolian volcano (Gravenne), attached to the young volcanoes of Ardèche, the Gravenne de Thueyts is a Strombolian type volcano erupting crater culminating at 600 m. altitude.

- ☎ [04 75 36 46 26](tel:0475364626)
- ✉ tourisme@sourcesvolcans.com
- 🌐 More information www.otsv.fr/5aff0a



Openings : Toute l'année. **Prices :** Accès libre.



Volcano : Montpezat's Gravenne

The volcano of Gravenne, Montpezat side is an old Strombolian cone of 806 meters. The flows, emitted by this Strombolian volcano, have all spilled into the Fontaulière valley.



- 📍 La Gravenne de Montpezat - **Montpezat-sous-Bauzon**
- ☎ [04 75 94 41 29](tel:0475944129)
- ✉ mairie@montpezatsousbauzon.fr
- 🌐 More information www.otsv.fr/a02827

Openings : Toute l'année. **Prices :** Accès libre.

The "suc" of Bauzon, volcanic cone

The suc de Bauzon, in the town of Montpezat sous Bauzon is a typical strombolian volcanic cone that rises to 1471m.

- ☎ [04 75 94 41 29](tel:0475944129)
- ✉ mairie@montpezatsousbauzon.fr
- 🌐 More information www.otsv.fr/b44404



Openings : Toute l'année. **Prices :** Accès libre.



The Chambon's maar

The Maar of Chambon is a volcanic explosion crater cut into the base, located a little south of that of the Vestide du Pal and crossed by the Chambon stream. Stone extractions were made to build some houses in the village.



- 📍 Route du Pal - **Montpezat-sous-Bauzon**
- ☎ **04 75 94 41 29**
- ✉ **mairie@montpezatsousbauzon.fr**
- 🌐 More information www.otsv.fr/e91415

Openings : Toute l'année. **Prices :** Accès libre.

Mofette of carbon dioxide in Meyras

The Meyras mofette is a carbon dioxide emanation from the cooling lava underground. The site was recently restored by the commune of Meyras. Guided tours will be offered.

- 📍 300, Ronde du Parc - **Meyras**
- ☎ **04 75 94 42 40**
- ✉ **contact@meyras.fr**
- 🌐 More information www.otsv.fr/0592f1



Dragonflies' pond

The dragonfly pond is a marsh, a true cradle of biodiversity in the Monts d'Ardèche Geopark: Dragonflies, toads, frogs flourish for the delight of visitors!



- 📍 Château de Rochemure - **Jaujac**
- ☎ **04 75 36 38 60**
- ✉ **accueil@pnrma.fr**
- 🌐 More information www.otsv.fr/434c8a

Openings : Toute l'année. **Prices :** Accès libre.

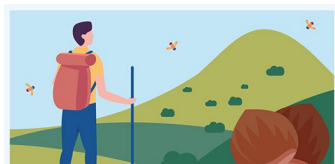
The hell's mouth waterfall

The waterfall of the "Gueule de l'enfer" = Hell's mouth is fed by the brook Merdaric from the village of character of Thueyts. If you're lucky, you will only be able to see it after heavy rains. You can observe it along the hiking trail that leads to Devil's Bridge.

- ☎ **04 75 36 46 26**
- ✉ **tourisme@sourcesvolcans.com**
- 🌐 More information www.otsv.fr/e9a523



Openings : Toute l'année. **Prices :** Accès libre.



L'application est proposée par le Parc naturel régional des Monts d'Ardèche et les offices de tourisme du territoire pour découvrir des magnifiques sentiers, paysages et patrimoines. comprend des randonnées pédestres, équestres, vélos, VTT et même hivernales avec les parcours de ski de randonnée et de raquettes à neige.





Queen's scale

The queen's scale is composed of 215 steps stairs cut in the volcanic rock will lead you to the plain of the Vernède, it also allows you to reach the old abandoned village called Fargebelle before descending to the natural site of the Pont du diable.



- 📍 Place du champ de Mars - **Thueyts**
- ☎ **04 75 36 46 26**
- ✉ tourisme@sourcesvolcans.com
- 🌐 More information www.otsv.fr/383fe5

Openings : Toute l'année. **Prices :** Accès libre.

Ray Pic Waterfalls

The waterfalls of the Ray Pic are a natural volcanic site classified since 1931, where the water of the river Bourges gushes in the middle of the basaltic flows on the town of Péreyres. Bathing prohibited

- 📍 Route du Ray Pic - **Péreyres**
- ☎ **04 75 36 46 26**
- ✉ tourisme@sourcesvolcans.com
- 🌐 More information www.otsv.fr/3c5178



Openings : Toute l'année. **Prices :** Accès libre.



The Peschier water spring

At the bottom of Jaujac's volcano, the Peschier mineral spring was formerly very popular. You can still enjoy its clear, semi-sparkling, ferruginous water on the spot.



- 📍 Chemin de la Source du Peschier - **Jaujac**
- ☎ **04 75 36 38 60**
- ✉ accueil@pnrma.fr
- 🌐 More information www.otsv.fr/e4809e

Openings : Toute l'année. **Prices :** Gratuit

The hole rock

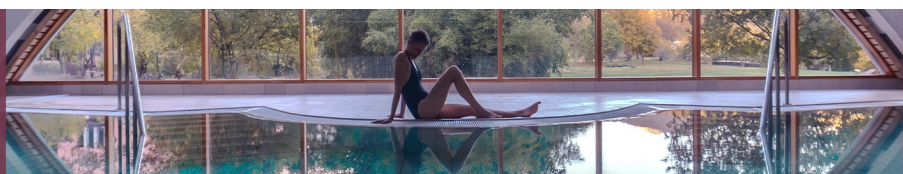
The holed Rock, "Lou Ron Trooutcha" in Ardèche dialect is a geological feature located in the town of Mayres. The rock is so called because it has a skylight formed in a pile of stones.

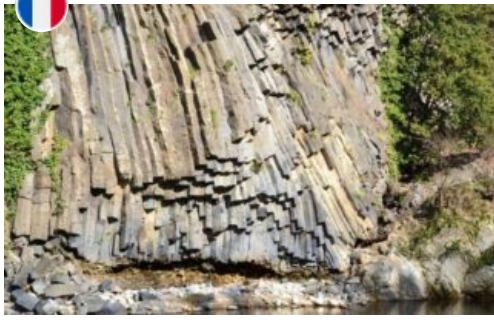
- 📍 Sentier de Peyralade - Montlaur - **Mayres**
- ☎ **04 75 87 21 38**
- ✉ mairie@mayres-ardeche.fr
- 🌐 More information www.otsv.fr/106cfb



Openings : Toute l'année. **Prices :** Accès libre.

THERMES
Neyrac-les-Bains
 Cures thermales
 Spa et bien-être





Basalt flows of the Amarnier in Meyras

The site of the Amarnier flows allows a relative dating and the study of the different eruptive phases of the Young Volcanoes of Ardèche. It is possible to observe the superposition of the lava flows of Gravenne-de-montpezat and Ray-Pic.



☎ [04 75 36 38 60](tel:0475363860)
✉ accueil@pnrma.fr
🌐 More information www.otsv.fr/6eb12b

Openings : Toute l'année. **Prices :** Accès libre.

King's scale

This staircase consists of volcanic stones is located in a natural fault in the basaltic flow of the Causeway Giants. It also allows you to join the village of Thueyts up the climb from the Devil's Bridge.

📍 Place du champ de Mars - **Thueyts**
☎ [04 75 36 46 26](tel:0475364626)
✉ tourisme@sourcesvolcans.com
🌐 More information www.otsv.fr/4739ae



Openings : Toute l'année. **Prices :** Accès libre.



Barnas' Botanical trail

Created by « les amis de Lafarre » association, the botanical trail invites you to the discovery of local flora. The signage presents you the specificity of the plants and trees.



📍 Place Saint Théophrede - **Barnas**
☎ [04 75 36 40 12](tel:0475364012)
✉ mairie@barnas.fr
🌐 More information www.otsv.fr/fbcd0b

Openings : Toute l'année. **Prices :** Accès libre. Renseignements : Les Amis de Lafarre - 06 04 09 17 81.

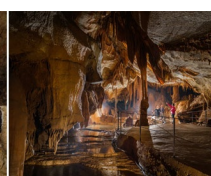
Basaltic flow in Fabras

Famous pavements and colonnades with blue basalt prisms. On the banks of the Lignon, this flow is considered the most beautiful in Europe.

☎ [04 75 94 10 76](tel:0475941076)
✉ fabras@wanadoo.fr
🌐 More information www.otsv.fr/106115



Openings : Toute l'année. **Prices :** Accès libre.




3 FORMULES	
3 JOURS	46€
5 JOURS	60€
ANNUEL	79€





The Giant's Causeway

The Giant's Causeway is a basalt flow from the Strombolian volcano of Gravenne de Thueyts. It reaches more than 50 m thick and 80 m high, so it is one of the most imposing of the Young Volcanoes of Ardèche and one of the highest in Europe.



☎ [04 75 36 46 26](tel:0475364626)
✉ tourisme@sourcesvolcans.com
🌐 More information www.otsv.fr/d1a679

Openings : Toute l'année. **Prices :** Accès libre.

Basaltic flow in Burzet

The Verdier site located in the heart of the village of Burzet, these basalt flows result from the Ray-Pic, one of the basalt flows in France richest in peridotite nodules. Very nice view of the Bridge.

📍 Site du Verdier - **Burzet**
☎ [04 75 94 43 91](tel:0475944391)
✉ contact@burzet.fr
🌐 More information www.otsv.fr/b47664



Openings : Toute l'année. **Prices :** Accès libre.



The coal mines in Prades

The former coal mines of Prades tell the industrial history of the Salyndre valley, closely linked to the coal mining of the Prades-Jaujac basin. They are on private land and cannot be visited. Visible from the road.



📍 Mine de Champgontier - **Prades**
☎ [04 75 38 03 11](tel:0475380311)
✉ prades.mairie@wanadoo.fr
🌐 More information www.otsv.fr/bcf919

Prices : Accès libre. Celles-ci sont situées sur des terrains privées et non accessibles à la visite.

The Rock of Abraham

The Rock of Abraham is a 1,498-metre high peak. It is the highest point between the municipalities of Barnas de La Souche and Mayres in Ardèche.

☎ [04 75 87 21 38](tel:0475872138)
✉ mairie@mayres-ardeche.fr
🌐 More information www.otsv.fr/a615b8



Openings : Toute l'année. **Prices :** Gratuit



AGENDA





Faysses du moulinage of Chirols

The faysses, terraces or "clos", were used to make crops on several levels in Ardèche. The beans had always been occupied by vines, fruit trees or vegetable plants, they are being rehabilitated today.



- ☎ [04 75 94 40 11](tel:0475944011)
- ✉ mairie.chirols@inforoutes.fr
- 🌐 More information www.otsv.fr/8f1dc7

Openings : Toute l'année. **Prices :** Accès libre.

Mont Aigu

Mont Aigu is an imposing geological feature marked by impressive scree. Around him, an Integral Biological Reserve was set up by the NFB: it testifies to the presence of an exceptional natural heritage.

- ☎ [04 75 37 90 11](tel:0475379011)
- ✉ contact@lasouche.fr
- 🌐 More information www.otsv.fr/0dd5af



Openings : Toute l'année. **Prices :** Gratuit



Saint Marguerite point of view

The site of Sainte Marguerite (987 m) is located in Chirols. With its chapel, its summit offers a 360° viewpoint from the Tanargue ranges to Mont Ventoux via the Escrinet and the Pre-Alps.



- 📍 Route de Sainte Marguerite - **Chirols**
- ☎ [04 75 94 40 11](tel:0475944011)
- ✉ mairie.chirols@inforoutes.fr
- 🌐 More information www.otsv.fr/f0f490

Openings : Toute l'année. **Prices :** Accès libre.

Pont de Labeaume Basalt flows

The basaltic flows of Pont-de-Labeaume, practically located at the confluence of three valleys, present a major geological attraction on a reduced surface: morphology of the valleys easily decipherable by the superposition of different flows.

- 📍 Le village - **Pont-de-Labeaume**
- ☎ [04 75 38 05 25](tel:0475380525)
- ✉ mairie.pontdelabeaume@orange.fr
- 🌐 More information www.otsv.fr/bcb596



Openings : Toute l'année. **Prices :** Accès libre.



Partez à l'aventure vers 7 Jeunes Volcans d'Ardèche.

Sur chaque volcan ou à proximité, une borne est implantée ; elle vous permet de poinçonner votre Pass.

Présentez triomphalement votre Pass' avec 7 poinçons dans les Offices de tourisme* ou à la Maison du Parc à Jaujac et vous vous verrez remettre le prestigieux badge «Explorateur des Jeunes volcans d'Ardèche».





Carboniferous basin of Prades-Jaujac-La Souche

Coal basin (carbon composition) oriented east-west, twenty kilometers long between La Souche and Lalevade, and a few hundred meters wide at 1200 meters.



☎ [04 75 36 38 60](tel:0475363860)

✉ accueil@pnrma.fr

🌐 More information www.otsv.fr/fe7c78

Openings : Toute l'année. **Prices :** Accès libre.

The Féraou gours

Gour Féraou is located in the hamlet of Conges in the town of Mayres, it forms a natural pot at the foot of a waterfall.

📍 Hameau de Conges - **Mayres**

☎ [04 75 87 21 38](tel:0475872138)

✉ mairie@mayres-ardeche.fr

🌐 More information www.otsv.fr/b40bab



Openings : Toute l'année. **Prices :** Accès libre.



Basalt flow in Jaujac

Famous causeways and columns with blue basalt prisms. On the banks of the Lignon, this gigantic flow seems to want to drown us creating impressive gorges looking like organ pipes. It is said to be the most beautiful in Europe.



☎ [04 75 93 22 28](tel:0475932228)

✉ mairie@jaujac.fr

🌐 More information www.otsv.fr/ca42b0

Openings : Toute l'année. **Prices :** Accès libre.

Autureyre rock

The Rocher d'Autureyre (Autureyre Rock) is located on the heights of the picturesque village of Thueyts. Standing at the top of the hill its overlooking on the valleys will make you fall in love with its unique panorama, it is known as a cosmo-telluric high point...

☎ [04 75 36 46 26](tel:0475364626)

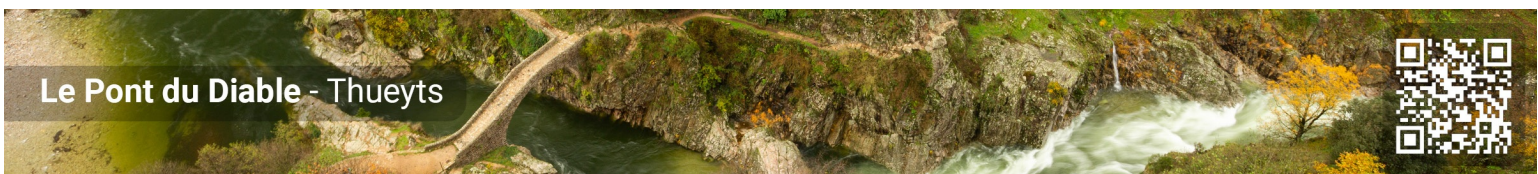
✉ tourisme@sourcesvolcans.com

🌐 More information www.otsv.fr/350944



Openings : Toute l'année. **Prices :** Accès libre.

Le Pont du Diable - Thueyts





Natural sparkling water of Peyralade

The water source of the Peyralade is naturally sparkling ! Visible during a hike on the side «adret», largely sunny.



- 📍 Sentier de Peyralade - Montlaur - **Mayres**
- ☎ [04 75 87 21 38](tel:0475872138)
- ✉ mairie@mayres-ardeche.fr
- 🌐 More information www.otsv.fr/05b837

Openings : Toute l'année. **Prices** : Accès libre.

Souilhol Volcanic bomb

This is the largest volcanic bomb in the region of the Young Volcanoes of the Ardèche. This bomb (the lip of the Souilhol volcano crater) has a vaguely tapering aspect and probably weighs seven to ten tons.

- 📍 Hameau du Souilhol - **Meyras**
- ☎ [04 75 94 42 40](tel:0475944240)
- ✉ contact@meyras.fr
- 🌐 More information www.otsv.fr/75da35



Openings : Toute l'année. **Prices** : Accès libre.



Tanargue Mountain Range

The Tanargue massif, which culminates at almost 5,000 feet, overlooks the entire Pays Beaume-Drobie. This vast crest of granite which stands out in the landscape takes the name 'Tanargue' from the protohistoric era.



- ☎ [04 75 37 24 48](tel:0475372448)
- ✉ contact@cevennes-ardeche.com
- 🌐 More information www.otsv.fr/7a22d3

Prices : Gratuit

Maar Doris

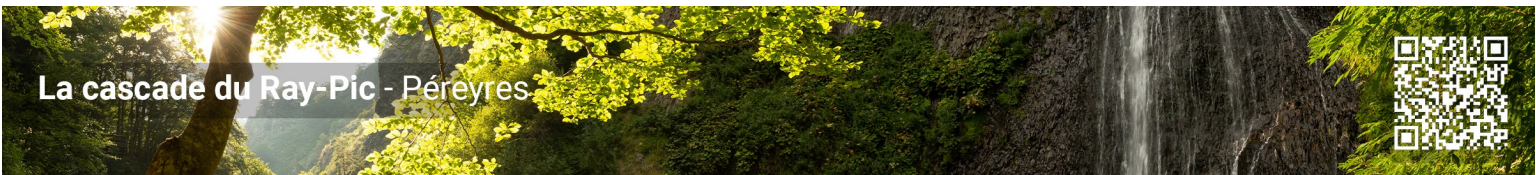
Located on the thermal site of Neyrac-les-Bains, the Maar Doris is an explosion crater. This type of maar is created when a very hot magma (lava) 1200C° meets the water contained in the subsoil several hundred meters deep.

- ☎ [04 75 94 42 40](tel:0475944240)
- ✉ contact@meyras.fr
- 🌐 More information www.otsv.fr/85130f



Openings : Toute l'année. **Prices** : Accès libre.

La cascade du Ray-Pic - Péreyres





The Prades coalfield and its mines

The Prades coalfield and its mines form a kind of parallelogram, two kilometers wide, lying about ten kilometers from north-east to south-west, around the communes of Lalevade d'Ardèche and Prades.



☎ [04 75 38 03 11](tel:0475380311)
✉ prades.mairie@wanadoo.fr
🌐 More information www.otsv.fr/8d708a

Openings : Toute l'année. **Prices :** Accès libre. Celles-ci sont situées sur des terrains privées et non accessibles à la visite.

Bowl of Jaujac volcano

The volcano of the Jaujac Cup takes its name «Cup» of its shape, evoking, it is said, a cup to drink. «It is one of the most regular volcanoes in France, the most perfect even» (Brousse & Berger, 1967, p.3).

☎ [04 75 93 22 28](tel:0475932228)
✉ mairie@jaujac.fr
🌐 More information www.otsv.fr/d3c591



Openings : Toute l'année. **Prices :** Accès libre.



Souilhol volcano

The volcano of Souilhol and its two flows and the maar Doris, are linked to the last eruptive episode that affected the Bas Vivarais in the town of Meyras and its Young Volcanoes of Ardèche.



📍 Route de Neyrac Bas - **Meyras**
☎ [04 75 94 42 40](tel:0475944240)
✉ contact@meyras.fr
🌐 More information www.otsv.fr/5e2230

Openings : Toute l'année. **Prices :** Accès libre.

The vestide of the Pal

The Vestide du Pal is a big maar crater of 1700m of diameter and 150m of depth. A succession of basalt alluvial fan created itself inside the crater. It could be the biggest maar crater of Europe.

📍 Souché Le Roux - **Montpezat-sous-Bauzon**
☎ [04 75 94 41 29](tel:0475944129)
✉ mairie@montpezatsousbauzon.fr
🌐 More information www.otsv.fr/16cc33



Openings : Toute l'année. **Prices :** Accès libre.



Office de Tourisme Sources & Volcans
2 place du bosquet
Neyrac-les-Bains
07380 Meyras

à votre écoute toute l'année

04 75 36 46 26
tourisme@sourcesvolcans.com
www.sourcesvolcans.com
Facebook Instagram YouTube @sourcesetvolcans