



SOURCES & VOLCANS
TERRE DE MERVEILLES

Destination de voyage exceptionnelle pour les amateurs de nature et de découvertes



Base canyon de la Besorgues

A few miles from Aubenas, come and discover "la base Canyon de la Besorgues" : guided activities in rivers or in wilderness (canyoning, speleology, via ferrata, climbing, ...) for all ages and with professionals.



📍 28, Chemin de Labro, Labro - **Labastide-sur-Bésorgues**

☎ **04 75 38 67 37**

✉ contact@canyon-besorgues.com

🌐 More information www.otsv.fr/bbf0cb

Openings : From 15/04 to 11/11.

Base VTT | Circuit 01: Discovering the village

Country walk around and in the heart of the village of Jaujac. Accessible for children. The itinerary passes by the house of the Monts d'Ardèche Regional Natural Park, the centre and the old village, the Chastelas.

📍 50 allée Marie-Sauzet - **Jaujac**

☎ **04 75 36 46 26**

✉ tourisme@sourcesvolcans.com

🌐 More information www.otsv.fr/397dc1



Openings : All year round. **Prices** : Free access.



Base VTT | Circuit 03 : Enduro course

Enduro course, fun and sporty, allowing to combine the pleasure of a downhill itinerary with the sporty character of the few climbs strewn on the course located under the peaks of Ladenne and Courcoussat.



📍 50 allée Marie-Sauzet - **Jaujac**

☎ **04 75 36 46 26**

✉ tourisme@sourcesvolcans.com

🌐 More information www.otsv.fr/a3a289

Openings : All year round. **Prices** : Free access.

Base VTT | Circuit 04 : The Col de la Croix de Millet by the volcano

Varied route, around the village with an ascent to the top of the Col de Millet.

📍 50 allée Marie-Sauzet - **Jaujac**

☎ **04 75 36 46 26**

✉ tourisme@sourcesvolcans.com

🌐 More information www.otsv.fr/41c15c



Openings : All year round. **Prices** : Free access.



Openings : All year round. **Prices** : Free access.

Base VTT | Circuit 05 : On the lower valley of the Lignon

This circuit takes beautiful and playful paths in the undergrowth, sometimes technical. Passage to Fabras, then descent on a beautiful monotrace in the "Grand Val" before crossing several bridges! Climbs and descents follow one another.



📍 50 allée Marie-Sauzet - **Jaujac**
☎ **04 75 36 46 26**
✉ tourisme@sourcesvolcans.com
🌐 More information www.otsv.fr/158c66

Base VTT | Circuit 08 : Le tour du Tanargue

This long and physical circuit takes you to the Tanargue massif. The route takes forest paths with magnificent landscapes. Wild atmosphere and panoramas guaranteed! At the end of the course, descent on nearly 14 kms.

📍 50 allée Marie-Sauzet - **Jaujac**
☎ **04 75 36 46 26**
✉ tourisme@sourcesvolcans.com
🌐 More information www.otsv.fr/5fe9ba



Openings : All year round. **Prices** : Free access.



Classic and electric bike hire with Balazuc Loisirs

Bike hire on the "Via Ardèche" greenway (former railway line), between Vogué and Grospierrres (25 km). Discover our ultra-comfortable beach cruiser bikes, for a gentle ride through magnificent landscapes, or our electric bikes.



📍 78 impasse des Salles - **Balazuc**
☎ **06 89 43 72 33**
✉ contact@balazuc-loisirs.com
🌐 More information www.otsv.fr/5dec7b

Openings : From 01/01/2024 to 30/06/2025 Opening hours on Monday, Tuesday, Wednesday, Thursday, Friday and Saturday between 9 am and 12 pm and between 1.30 pm and 5 pm. From 01/07 to 31/08/2025 daily between 9 am and 12 pm and between 1.30 pm and 6 pm. From 01/09 to 31/12/2025 Opening hours on Monday, Tuesday, Wednesday, Thursday, Friday and Saturday between 9 am and 12 pm and between 1.30 pm and 5 pm. **Prices** : From 18 to 30 € with a canoe (6 to 18 km) From 23 to 35 € with a kayak

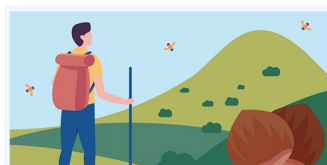
Ebike rentals

Rental and delivery of adult and child electric bikes delivered directly to your accommodation. A day/ half day/ week or for holidays. Self-guided exit by electric bike with deposit on the Ardèche plateau. Online booking.

📍 21 place du champ de Mars - **Thueyts**
☎ **07 89 73 34 45**
✉ reservation@location-ebike.com
🌐 More information www.otsv.fr/f21ddd



Openings : From 01/01 to 31/12 between 8 am and 8 pm. **Prices** : One price: from 36 €. Prices vary according to type of hire: mountain bike or VTC. Half-day hire: from €36 for VTCs and €40 for mountain bikes Children's trailer hire from €10 Themed bike outings from €45.



L'application est proposée par le Parc naturel régional des Monts d'Ardèche et les offices de tourisme du territoire pour découvrir des magnifiques sentiers, paysages et patrimoines. comprend des randonnées pédestres, équestres, vélos, VTT et même hivernales avec les parcours de ski de randonnée et de raquettes à neige.

Disponible sur
App Store

DISPONIBLE SUR
Google Play





Excursion: Bachelor/Bachelorette Party

Your friend will soon take the plunge and forget his single life? Live together a bachelor party girl/ boy! So we forget the costumes and other bad taste makeup and we think weekend sensation...



📍 18 avenue du Val d'Ardèche - **Thueyts**

☎ **07 89 73 34 45**

🌐 More information www.otsv.fr/68cc4a

Openings : All year round daily between 9 am and 7 pm. On request. **Prices** : One price: 65 €. Free for the groom/the future bride ! The price includes - The Elecrique bike with a discovery and sensation route - Via ferrata equipment and entrance to the course -an aperitif of Ardèche specialty.

Excursion: Cycling, Via Ardèche and Hydrotherapy

Discover the Via Ardèche in Lalevade before stopping by the thermal baths of Neyrac-les-Bains or Vals-les-Bains, a perfect opportunity to combine sport and relaxation in Ardèche.

📍 18 avenue du Val d'Ardèche - **Thueyts**

☎ **07 89 73 34 45**

🌐 More information www.otsv.fr/6527a6



Openings : All year round daily between 9 am and 7 pm. **Prices** : One price: from 70 € (Price per person). The price includes : - Electric bikes - Admission for 2 hours to Vals les Bains - online guidance (possibility of including the picnic of Ardèche specialties).



Excursion: Free descent by bike

Set off from the Bez farm and descend the foothills of the Tanargue, between forest trails and small bucolic roads, perched villages and bathing spots. Transport by van with your bikes included to the starting point.



📍 18 avenue du Val d'Ardèche - **Thueyts**

☎ **07 89 73 34 45**

🌐 More information www.otsv.fr/9c7c83

Openings : All year round daily between 9 am and 7 pm. **Prices** : One price: 79 €. The price includes: - Electric bikes - transport by private van to the Bez farm - line guidance.

Excursion: sport bike & Via Ferrata

Discover the crests and paths of the Gravenne volcano on an electric mountain bike before reaching the inevitable Devil's Bridge and its via ferrata. A sporty route and a unique view over the Ardèche for guaranteed thrills!

📍 18 avenue du Val d'Ardèche - **Thueyts**

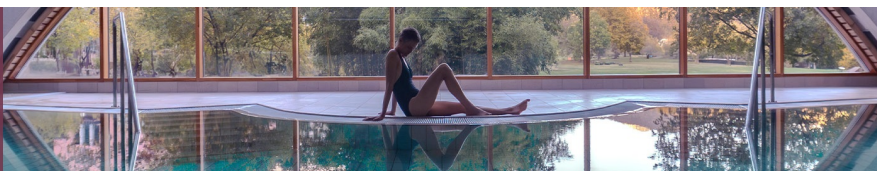
☎ **07 89 73 34 45**

🌐 More information www.otsv.fr/ce8903



Openings : All year round daily between 9 am and 7 pm. **Prices** : One price: 63 € (Per person). The price includes : - The electric mountain bike rental - Via ferrata equipment - Entry to the via ferrata course - online guiding (possibility to include a picnic of Ardèche specialties).

THERMES
Neyrac-les-Bains
Cures thermales
Spa et bien-être





Excursion: Sunset aperitif for two

Mix up effort & pleasure with our apero-sunset from Thueyts. Embark in the late afternoon with your electric bikes and your 100% local picnic, towards the sunset on an exceptional panorama of the Monts d'Ardèche.



📍 18 avenue du Val d'Ardèche - **Thueyts**
☎ **07 89 73 34 45**
🌐 More information www.otsv.fr/87b14a

Openings : All year round from Monday to Saturday between 4 pm and 9 pm. **Prices** : One price: 110 € (For 2 people). The price includes : - Electric bikes - Aperitif picnic of Ardèche specialties - online guidance.

Face Sud : Canyoning, Via Ferrata, Spéléologie, Escalade, Via Cordata, Canoë-kayak – Vallon Pont d'Arc

Specialists in outdoor sports - Vallon Pont d'Arc. Canyoning, via ferrata, caving, canoeing and rock climbing. Fully qualified team of professionals. Weekends deals. Packages on offer for groups, team-building endeavours and seminars. Activities suitable for childr..

📍 89 allée des Cades - **Vallon-Pont-d'Arc**
☎ **04 75 87 27 23**
✉ contact@face-sud.com
🌐 More information www.otsv.fr/fd803d



Openings : From 16/01 to 22/12. Closed on Sunday. **Prices** : Group rate available for > 8 people.



Mountain bike base | Circuit 02: The living corridor and the Freydeyres stream

Circuit around Jaujac, from the coulée vive to Fabras.



📍 50 allée Marie-Sauzet - **Jaujac**
☎ **04 75 36 46 26**
✉ tourisme@sourcesvolcans.com
🌐 More information www.otsv.fr/e7430d

Openings : All year round. **Prices** : Free access.

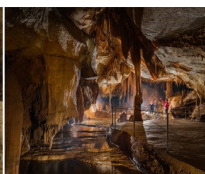
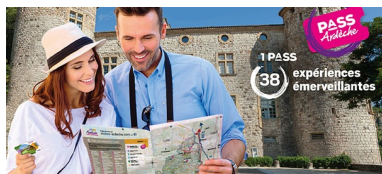
Mountain bike routes base in Ardèche Sources et Volcans

Between the "sucs" and the young volcanoes, discover by mountain bike an exceptional territory which extends from the Cévennes Vivaroises to the Ardèche Mountains. Our site includes 6 marked routes adapted to all levels of practice on more than 100km of circuits.

📍 Parking de la Maison du Parc - **Jaujac**
☎ **04 75 36 46 26**
✉ tourisme@sourcesvolcans.com
🌐 More information www.otsv.fr/239597



Openings : All year round. **Prices** : Free access.



3 FORMULES
3 JOURS 48€
6 JOURS 60€
ANNUEL 79€





Pumptrack of Lalevade in Ardèche

A closed loop course consisting of several consecutive bumps and sharp turns. Bikes, BMX, mountain bikes and all board sports such as skateboards, longboards, rollerblades and scooters are allowed.



📍 Allée de Vals - **Lalevade-d'Ardèche**

☎ **04 75 38 00 51**

✉ accueil@lalevade.fr

🌐 More information www.otsv.fr/1fcb53

Skate park in Meyras

Skate park with two banisters with also some equipments to do a tiny mountain bike tour.

📍 Impasse des Micocouliers (proche parking camping car) - **Meyras**

☎ **04 75 94 42 40**

✉ contact@meyras.fr

🌐 More information www.otsv.fr/22f8f2



Openings : Throughout the year : open daily.



Office de Tourisme Sources & Volcans
2 place du bosquet
Neyrac-les-Bains
07380 Meyras

à votre écoute toute l'année

04 75 36 46 26
tourisme@sourcesvolcans.com
www.sourcesvolcans.com
f @sourcesetvolcans