



Brewery l' Ale'Ouët

From one beer to the next, the Brasserie L'Ale'Ouët will introduce you to the complex world of brewing. From locally-processed barley to fine bubbles, the brewers combine self-build boilermaking with the alchemy of raw materials.



 95 Route de la plaine du Fez - **Chirols**
 **06 77 57 92 79**
 **aleouet@posteo.net**
 More information **www.otsv.fr/e8d49a**

Openings : From 01/01 to 31/12/2026 from Monday to Friday between 9 am and 5 pm. Closed on public holidays and during the Christmas holidays.

Chèvrerie La Myrtilleraie

Grégoire raises his goats with passion and welcomes visitors from mid-March to mid-October. Take part in milking, learn about his craft and buy his goat's cheese on site or at nearby markets.

 180 Chemin de la Fabrique - **Péreyres**
 **0620162371**
 **groslydie@orange.fr**
 More information **www.otsv.fr/a47869**



Openings : From 15/03 to 15/11/2026 on Sunday. Visits to the goat farm and goat milking demonstrations from mid-March to mid-October. Other visiting times available on request. **Prices :** Free entry. Product prices are available on site or by contacting us.

Clos de Bonnaud goat farm

It's the story of the Gascoin family, passionate about sharing their know-how and their goats, and you can feel it: goat's milk cheeses, milk and cosmetics, with their many virtues, await you.



 Le Clos de Bonnaud - **Montpezat-sous-Bauzon**
 **06 67 85 80 03**
 **gascoin.magali@bbox.fr**
 More information **www.otsv.fr/ae03c0**

Openings : From 01/03 to 30/11/2025 daily between 10.30 am and 12.30 pm. From 01/03 to 30/11/2026 daily between 10.30 am and 12.30 pm. **Prices :** Free of charge.

Confiturerie de La Souche : La Chareyrade

Established in La Souche since 1962, the jam factory specialises in the production of PDO Ardèche chestnut purée and traditional jams. You'll also find a range of sweet and savoury Ardèche biscuits.

 562 Chemin de la Chareyrade - **La Souche**
 **04 75 37 41 17**
 **contact@soppreg.fr**
 More information **www.otsv.fr/8d0bf1**



Distillation workshops open to the public on the farm or elsewhere! A desire to pass on and share traditional knowledge about plants and their uses. Distillation of plants and creation of organic hydrosols. Visits on request.



📍 700 Route de Vals les bains - **Chirols**
☎ **06 75 44 93 96**
✉ **troubatcecile@gmail.com**
🌐 More information **www.otsv.fr/73f721**

Openings : From 01/01 to 31/12/2026 daily. Workshops and walks on request. **Prices** : Adult: 15 to 30 € (per person). Free entry for children under 12, teachers.

La miche qui trotte



La Miche qui Trotte will delight you with its classic and revisited pastries, as well as its generous gourmet cakes and sourdough bread.

📍 35 Rue Jean Moulin - **Jaujac**
☎ **06 68 14 13 27**
✉ **lamichequitrotte@gmail.com**
🌐 More information **www.otsv.fr/ec766e**



Openings : From 01/01 to 31/03/2026 on Monday, Tuesday, Friday and weekends. 7:30 a.m. to 12:30 p.m. and 3:30 p.m. to 6:30 p.m. on Fridays and Saturdays. 7:30 a.m. to 12:30 p.m. on Mondays, Tuesdays and Sundays. From 01/04 to 30/08/2026 daily. From 7.30am to 12.30pm and from 5.30 to 6.30pm. From 01/09 to 31/12/2026 on Monday, Tuesday, Friday and weekends. 7:30 a.m. to 12:30 p.m. and 3:30 p.m. to 6:30 p.m. on Fridays and Saturdays. 7:30 a.m. to 12:30 p.m. on Mondays, Tuesdays and Sundays.
Prices : Prices for our delicacies are available directly at the on-site shop.

La myrtilleraie

La Myrtilleraie makes and sells jams, compotes, soups and chutneys from insecticide-free fruit and vegetables. From April 2024, you'll be able to find goat cheeses sold directly from the farm.



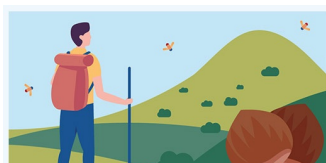
📍 115 Chemin de la Fabrique - **Péreyres**
☎ **0620162371**
✉ **groslydie@orange.fr**
🌐 More information **www.otsv.fr/a47869**

Openings : From 15/03 to 15/11/2026 daily between 10 am and 7 pm.

M. Boissin Jean-Claude



☎ **06 85 85 02 71**
✉ **boiJeanfort@hotmail.com**
🌐 More information **www.otsv.fr/afe38c**



L'application est proposée par le Parc naturel régional des Monts d'Ardèche et les offices de tourisme du territoire pour découvrir des magnifiques sentiers, paysages et patrimoines. comprend des randonnées pédestres, équestres, vélos, VTT et même hivernales avec les parcours de ski de randonnée et de raquettes à neige.





Edith, a producer of wild and cultivated plants with organic certification, offers locally sourced, artisanal products: herbal teas, soaps, solid shampoos, balms, and more. She also organises nature activities to help people discover her environment.



✉ edith.weihreter@gmail.com
🌐 More information www.otsv.fr/80497e

Openings : From 01/01 to 31/12/2026 daily. By appointment.

Simple pleasures farm



Sophie and Vincent offer their products: hydrolats, essential oils, chestnuts, blueberries, honey, fruit juices and other seasonal items (candles, scented salts, balms). Certified organic and DEMETER labelled.

📍 2255 Célas - **Saint-Pierre-de-Colombier**

☎ [04 75 88 38 19](tel:0475883819)

✉ lafermedesplaisirssimples@outlook.fr

🌐 More information www.otsv.fr/756128



Openings : From 01/01 to 31/12/2026 daily. **Prices** : Prices directly available on the website.

Vincent apiaries

Production of various honeys typical of the Cévennes region, particularly chestnut honey. Available all year round. Sold at the La Biasso farm shop in Jaujac. Available at the Burzet market in summer and sometimes at the Jaujac market in summer.



📍 Le Margoulier - **Prades**
☎ [06 01 63 97 19](tel:0601639719)
✉ vingt.100b@gmail.com
🌐 More information www.otsv.fr/e87346

Openings : From 01/01 to 12/31.



Office de Tourisme Sources & Volcans
2 place du bosquet
Neyrac-les-Bains
07380 Meyras

à votre écoute toute l'année

04 75 36 46 26
tourisme@sourcesvolcans.com
www.sourcesvolcans.com
f i y @sourcesetvolcans