



**SOURCES & VOLCANS**  
TERRE DE MERVEILLES

Destination de voyage exceptionnelle pour les amateurs de nature et de découvertes



## Bistrot Brioude

Bistronomic restaurant in a conservatory atmosphere, with shady terraces in summer. Bistrot Brioude offers market-fresh cuisine using local, seasonal produce and revisited family recipes.



📍 7 rue Mazade - **Meyras**

☎ **04 75 36 41 07**

✉ [info@claudébrioude.fr](mailto:info@claudébrioude.fr)

🌐 More information [www.otsv.fr/6b4975](http://www.otsv.fr/6b4975)

**Openings** : From 01/01 to 31/12 between 12 pm and 2 pm. Closed Monday and Sunday. Closed Monday at noon, Monday evening, Tuesday evening and Sunday evening.

**Prices** : Adult menu: 28 € Child menu: from 15 €. Theme menus: Cochonnailles, Japanese inn Izakaya...special rates.

## Bistrot de Pays: The Point d'Orgues

Bar-restaurant serving 100% home-cooked food made with fresh, local produce. Ardèche wine and beer cellar, homemade cocktails. Open every lunchtime (except Wednesday) + Friday/Saturday evenings out of season.

📍 495, Route de l'Échelette - **Fabras**

☎ **04 75 94 26 72**

✉ [lepointdorgues@ecomail.fr](mailto:lepointdorgues@ecomail.fr)

🌐 More information [www.otsv.fr/9ba2b6](http://www.otsv.fr/9ba2b6)



**Openings** : From 13/01 to 22/02/2025. Closed Wednesday and Sunday. Monday lunch, Tuesday lunch, Thursday lunch, Friday Saturday lunch and dinner. From 17/03 to 30/06/2025. Closed on Wednesday. Timetable to be confirmed. From 01/07 to 31/08/2025. Closed on Wednesday. Every day for lunch and dinner. From 01/09 to 15/11/2025. Closed on Wednesday. Timetable to be confirmed. Dates to be confirmed.

**Prices** : A la carte: 15 to 23 € Adult menu: from 19 € Tasting menu: 34 € Child menu (10 years): 12 € Group menu: 25 to 40 € Menu of the day: from 19 € (bistro formula: main course + dessert) Coffee: from 1.40 € Wine: from 3.50 €.



## Cuisine Claude Brioude

Gourmet restaurant in a refined, bright setting overlooking the Ardèche valley. Market cuisine using local, seasonal produce. In summer, there's a shady terrace under the hundred-year-old plane trees.



📍 7, rue Mazade - **Meyras**

☎ **04 75 36 41 07**

✉ [info@claudébrioude.fr](mailto:info@claudébrioude.fr)

🌐 More information [www.otsv.fr/7124c2](http://www.otsv.fr/7124c2)

**Openings** : All year round. From Wednesday noon to Sunday noon and from Wednesday evening to Saturday evening. Closed Monday and Tuesday. **Prices** : Tasting menu: 60 € Child menu: 15 €. Theme menus: Truffles and wine, Valentine's Day, Mother's Day... special rates.

## L'Estivin

On the picturesque square in Jaujac, in the heart of the Ardèche, L'Estivin invites you to savour local wines and delicacies. Discover unique local flavours in a friendly, authentic setting, typical of this village with character.

📍 19 place du Champ de Mars - **Jaujac**

☎ **04 69 22 24 40**

✉ [lestivin@hotmail.com](mailto:lestivin@hotmail.com)

🌐 More information [www.otsv.fr/2279e6](http://www.otsv.fr/2279e6)



**Prices** : Menu of the day: from 22.50 €.



## La Sardasine

Restaurant, spaghetteria, crepes, salads, ice-creams and italian pasta, In the center of the Village de Caractère of Meyras, all along the frescos route. Shaded terrace.



📍 184 Rue Grande - **Meyras**  
☎ **06 47 78 80 76**  
✉ [m\\_zuncheddu@hotmail.com](mailto:m_zuncheddu@hotmail.com)  
🌐 More information [www.otsv.fr/f20507](http://www.otsv.fr/f20507)

**Openings :** From 01/03 to 17/12/2024, every Wednesday, Thursday, Friday, Saturday and Sunday.

## Le Bistrot du Jardin

Le Bistrot du Jardin invites you to savour the best of the Ardèche with its traditional cuisine. Relax on the terrace over ice creams and cocktails. Every evening, enjoy our pizzas on the premises or to take away on 07 56 47 62 98.

📍 10 Route de Romegier - **Fabras**  
☎ **04 87 75 70 35**  
✉ [contact@lebistrotdujardin.fr](mailto:contact@lebistrotdujardin.fr)  
🌐 More information [www.otsv.fr/f2afe9](http://www.otsv.fr/f2afe9)



**Openings :** From 23/11/2024 to 31/12/2025, daily. Monday to Wednesday: 7am - 3pm Thursday and Friday: 7am - midnight Saturday: 9am - midnight Every day from 6pm to 9.30pm: takeaway pizzas. **Prices :** Adult menu: from 18.50 € (from Monday to Friday lunchtime) Child menu: 13 € (Main dish and a drink) Dish of the day: from 14 €. A la carte in the evening: a choice of starters to share, platters to share, main courses, side dishes and desserts.



## Mamie Paillette

In the heart of Jaujac, traditional home cooking and bubble waffles. Fresh local produce, Sunday brunch, gourmet afternoon desserts and a varied menu. Open Monday to Saturday 10.30am-10.30pm, Sunday 10am-3pm. Booking recommended.



📍 24 Place du Champ de Mars - **Jaujac**  
☎ **0975961480**  
✉ [mamiepaillette07@gmail.com](mailto:mamiepaillette07@gmail.com)  
🌐 More information [www.otsv.fr/0d2017](http://www.otsv.fr/0d2017)

**Openings :** All year round, daily. Open from Monday to Saturday from 10:30 am to 10:30 pm and on Sunday from 10am to 3pm. Closed for holidays from 2/10 to 11/10 inclusive. **Prices :** A la carte: 12.50 to 19 €. Brunch formula: from 16 € per person ( 10 € children under 12 years). Drinks are extra.

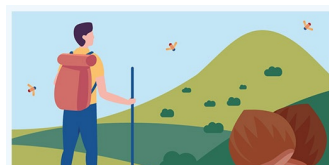
## Restaurant de l'Auberge de Montpezat

Inn located in the heart of the village of Montpezat. Traditional restaurant, cooking based on local and seasonal produce. Rooms combining authenticity and modern comfort renovated in 2015.

📍 10 route de la croisette - **Montpezat-sous-Bauzon**  
☎ **06 60 82 30 91**  
✉ [aubergedemontpezat07@gmail.com](mailto:aubergedemontpezat07@gmail.com)  
🌐 More information [www.otsv.fr/3d1acd](http://www.otsv.fr/3d1acd)



**Openings :** From 01/09/2024 to 30/06/2025, every Thursday, Friday, Saturday and Sunday. From 01/07 to 30/08/2025. Closed on Wednesday. Open Monday, Tuesday, evening and Thursday, Friday, Saturday and Sunday for lunch and dinner. **Prices :** A la carte: from 15 € Adult menu: 27 to 34 € (Full menu :starter, main course, dessert at €34) Child menu: 12.50 € Dish of the day: from 15 € Menu of the day: from 22.90 € Coffee: from 2 €. To go : on request.



L'application est proposée par le Parc naturel régional des Monts d'Ardèche et les offices de tourisme du territoire pour découvrir des magnifiques sentiers, paysages et patrimoines. comprend des randonnées pédestres, équestres, vélos, VTT et même hivernales avec les parcours de ski de randonnée et de raquettes à neige.

Disponible sur  
**App Store**

DISPONIBLE SUR  
**Google Play**







## Retour aux sources

Traditional cuisine with quality local produce: meat from the plateau, Mezenc fin gras, mushrooms, local cheeses. Restaurant selected by 'Goûtez l'Ardèche' and 'Les étapes savoureuses'. Takeaway meals.



📍 Le Gua - **Meyras**

☎ **04 75 94 47 29**

✉ **[restaurantretourauxsources2011@gmail.com](mailto:restaurantretourauxsources2011@gmail.com)**

🌐 More information **[www.otsv.fr/bb8381](http://www.otsv.fr/bb8381)**

**Openings :** From 31/03 to 05/07/2025. Closed on Wednesday. From 15/07 to 01/09/2025. Closed on Wednesday. From 02/09 to 31/10/2025. Closed on Wednesday. From 01/11 to 31/12/2025. Closed on Wednesday. Closed exceptionally on November 1st. **Prices :** Daily menu from Monday to Friday excluding public holidays: €19,5 Two other menus are available at €32 and €42.



**Office de Tourisme Sources & Volcans**  
2 place du bosquet  
Neyrac-les-Bains  
07380 Meyras

*à votre écoute toute l'année*

**04 75 36 46 26**  
[tourisme@sourcesvolcans.com](mailto:tourisme@sourcesvolcans.com)  
[www.sourcesvolcans.com](http://www.sourcesvolcans.com)  
f i y @sourcesetvolcans