



Biscuits Champ Blanc d'Ardèche

Christine makes her own biscuits and offers a wide range of sweet and savoury products: 100% chestnut flour biscuits with fruit, wafers, half-baked biscuits and savoury biscuits such as crisps and chestnut flour aperitifs.



📍 348 Route de Paillette - **Saint-Cirgues-de-Prades**

☎ **0646514486**

🌐 More information www.otsv.fr/b5a472

Openings : All year round, daily. **Prices** : Large pack of 9 flavours (270g): €11 Small pack of 9 flavours (135g): €6 Half-baked (140g): €8.50 Wafers (100g) hazelnut or wild strawberry or acacia flower: €5.50 Aperitif Champ Blanc (100g): €5.50 Chips (80g) with garlic (or without garlic), paprika, Herbes de Provence: €5.50 Chips (80g) paprika, Herbes de Provence: €5.50 Greek-style olive crisps (80g), Herbes de Provence: €6.00 Chestnut cream with pieces: (360g): €8.00 and from 2 jars €7.50 per jar Plain chestnut cream without pieces: (360g): 7.50€ and from 2 jars 7.00€ per jar Chestnut flour (500g): €12.00 (Pourette) Homemade meringue with chestnut cream (60g): €6.50 Jams 240g jar...

Clos de Bonnaud goat farm

Spend a pleasant and informative time visiting the farm and stocking up on farm produce. Farmhouse goat's cheese.

📍 Le Clos de Bonnaud - **Montpezat-sous-Bauzon**

☎ **06 67 85 80 03**

✉ gascoin.magali@bbox.fr

🌐 More information www.otsv.fr/ae03c0



Openings : Closed temporarily.



Drac brewery

Micro-brewery located in the heart of the village of Jaujac. Promoting our local terroir mixing ancestral and modern brewing techniques. Free tasting available. Brewery recommended in the guide Rando-bière en Drôme-Ardèche.



📍 16 Place St Bonnet - **Jaujac**

☎ **07 71 81 46 39**

✉ brasserie-drac@gmail.com

🌐 More information www.otsv.fr/031e98

Openings : Every day throughout the year. Closed on Sunday. Tuesday, Friday and Saturday: 10am to 1pm and 4pm to 9pm. Monday, Wednesday, Thursday: 4pm to 9pm.

Dumercier house

In the heart of the village of Jaujac, Maison Dumercier offers you a delicious range of sweet and savoury cookies, amaretti, cakes, tarts and viennoiseries. Our production varies with the seasons and our inspirations. Everything is made on site.

📍 Rue Jean Moulin - **Jaujac**

☎ **04 75 36 09 92**

✉ contact@maisondumercier.fr

🌐 More information www.otsv.fr/8611d1



Openings : From 01/04 to 30/08, daily. From 7.30am to 12.30pm and from 5.30 to 6.30pm. From 01/10 to 31/10. Closed on Wednesday. From 7.30am to 12.30pm and from 5.30 to 6.30pm. **Prices** : Prices of our biscuits available directly at the shop on site.



Ferme des Achillées

Distillation workshops open to the public at the farm or elsewhere! The aim is to pass on and exchange popular knowledge about plants and their uses. Distillation of plants and creation of hydrolats... Visits on request.



- 📍 700 Route de Vals les bains - **Chirols**
- ☎ **06 75 44 93 96**
- ✉ **troubatcecile@gmail.com**
- 🌐 More information www.otsv.fr/73f721

Openings : All year round, daily. Workshops and walks on request. **Prices** : Adult: 15 to 30 € (per person). Free entry for children < 12 years, teachers.

Fournil les Co'pains

The Fournil is a Scop that is to say a cooperative and participative company that offers bakery delights but also pizza evenings!

- 📍 30, allée du moulinage - **Chirols**
- ☎ **04 69 22 68 68**
- ✉ fournillescopains.scop@sfr.fr
- 🌐 More information www.otsv.fr/90d167



Openings : From 05/01 to 23/12/2024, every Monday, Wednesday and Friday between 11 am and 7 pm. Closed exceptionally on May 1st and November 11th. **Prices** : Prices of products directly on site.



Fromager les Hautes terres



- 📍 RN 102 - **Lanarce**
- ☎ **04 66 46 42 18**
- ✉ fromager-leshautesterres@orange.fr
- 🌐 More information www.otsv.fr/489fb1

Openings : All year round between 8 am and 7 pm.

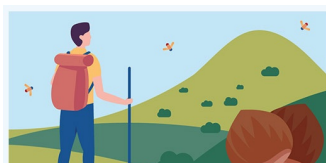
Garden centre

Garden Centre Plants and gardening items. Pet food: Royal Canin, Pro Plan, Purina Evalidis. Regional produce. Wine shop. Fishing tackle. Sale and dispatch of local fruit such as blueberry and chestnut throughout France and Europe.

- 📍 245 Route de Jaujac - **Prades**
- ☎ **04 75 38 01 25**
- ✉ jardinerie.pontier07380@gmail.com
- 🌐 More information www.otsv.fr/a114ea



Openings : From 01/01 to 31/12.



L'application est proposée par le Parc naturel régional des Monts d'Ardèche et les offices de tourisme du territoire pour découvrir des magnifiques sentiers, paysages et patrimoines. comprend des randonnées pédestres, équestres, vélos, VTT et même hivernales avec les parcours de ski de randonnée et de raquettes à neige.





Glacier Châtaigne et Caramel

Quality ice creams and sorbets made on site using local produce. Châtaigne & Caramel invites you to discover the ice creams and sorbets made in Jaujac.



- 📍 Place Saint Bonnet - **Jaujac**
- ☎ **06 76 75 67 87**
- ✉ chataigneetcaramel@gmail.com
- 🌐 More information www.otsv.fr/28b166

Openings : From 30/03 to 20/06 between 2 pm and 7 pm. Closed on Monday. Open on public holidays. From 21/06 to 28/09/2024 between 2 pm and 8 pm. Closed on Monday. Open on bank holidays. From 20/12 to 31/12, daily between 4 pm and 7 pm. **Prices :** Ice creams and sorbets in cones or jars: 1 scoop: €3 2 scoops: €5 3 scoops: €6.5 Boulier (12 scoops to take away): 25€.

La myrtilleiraie

La Myrtilleiraie makes and sells jams, compotes, soups and chutneys from insecticide-free fruit and vegetables. From April 2024, you'll be able to find goat cheeses sold directly from the farm.

- 📍 155 Chemin de la Fabrique - **Péreyres**
- ☎ **0620162371**
- ✉ groslydie@orange.fr
- 🌐 More information www.otsv.fr/a47869



Openings : From 10/01 to 31/01, daily between 10 am and 6 pm. From 01/03 to 30/11, daily between 10 am and 6 pm.



Nougat Le Petit Ardéchois

The oldest brand of nougat in the Ardèche, family know-how. Traditional handmade nougats, our speciality with chestnut pieces and Ardèche chestnut tree honey... Free visit and tasting, baking in the morning from 8am to 12pm.



- 📍 1085 Quartier les champs - **Saint-Étienne-de-Fontbellon**
- ☎ **04 75 89 11 79**
- ✉ lepetitardechois@yahoo.fr
- 🌐 More information www.otsv.fr/3dbe33

Openings : Open all year round, Monday to Saturday, 9am to 7pm. Closed Sundays and public holidays. Open on Sundays for groups by prior arrangement.

à votre écoute toute l'année



Office de Tourisme Sources & Volcans
2 place du bosquet
Neyrac-les-Bains
07380 Meyras

04 75 36 46 26
tourisme@sourcesvolcans.com
www.sourcesvolcans.com
f i y @sourcesetvolcans