



Biocoop les Gatôbis

Discover a wide variety of local products that we are delighted to offer in our shop. You'll also find a traditional cheese and charcuterie section, as well as a wide selection of zero-waste products.



📍 110 route d'Aubenas - **Prades**
☎ **04 75 87 50 39**
✉ contact@biocooplesgatobis.fr
🌐 More information www.otsv.fr/53e628

Openings : All year round, every Monday, Tuesday, Wednesday, Thursday, Friday and Saturday.

Community café: La p'tite bulle

La p'tite bulle is a place for associations to meet and discuss upcoming local activities and events.

📍 La Ptite Bulle, café associatif - **Prades**
☎ **04 75 38 51 19**
🌐 More information www.otsv.fr/984d64



Openings : From 01/01 to 22/12, every Tuesday, Wednesday, Thursday, Friday, Saturday and Sunday. Closed exceptionally on May 1st. **Prices** : Free access.



Fournil les Co'pains

The Fournil is a Scop that is to say a cooperative and participative company that offers bakery delights but also pizza evenings!



📍 30, allée du moulinage - **Chirols**
☎ **04 69 22 68 68**
✉ fournillescopains.scop@sfr.fr
🌐 More information www.otsv.fr/90d167

Prices : Prices of products directly on site.

Fromager les Hautes terres

📍 RN 102 - **Lanarce**
☎ **04 66 46 42 18**
✉ fromager-leshautesterres@orange.fr
🌐 More information www.otsv.fr/553f52



Openings : All year round between 8 am and 7 pm.



Glacier Châtaigne et Caramel

Quality ice creams and sorbets made on site using local produce. Châtaigne & Caramel invites you to discover the ice creams and sorbets made in Jaujac.



- 📍 Place Saint Bonnet - **Jaujac**
- ☎ **06 76 75 67 87**
- ✉ **chataigneetcaramel@gmail.com**
- 🌐 More information www.otsv.fr/28b166

Openings : From 30/03 to 20/06 between 2 pm and 7 pm. Closed on Monday. Open on public holidays. From 19/12 to 31/12, daily between 4 pm and 7 pm. **Prices :** Ice creams and sorbets in cones or jars: 1 scoop: €3 2 scoops: €5 3 scoops: €6.5 Boullier (12 scoops to take away): 25€.

Jardinerie Pontier et fils – Les Délices du Terroir

Discover the delights of the Ardèche in this shop. 'All the know-how of our local producers, we make it known.

- 📍 245 Route de Jaujac - **Prades**
- ☎ **04 75 38 01 25**
- ✉ **jardinerie.pontier07380@gmail.com**
- 🌐 More information www.otsv.fr/b80254



La biasso

La Biasso is a collective point of sale regrouping producers, craftsmen and an organic grocery store. We invite you to come and discover our products and our work.



- 📍 175 Rue Jean Moulin - **Jaujac**
- ☎ **09 83 42 53 66**
- ✉ **labiasso@protonmail.com**
- 🌐 More information www.otsv.fr/4f26c5

Openings : From 01/01 to 30/06 Opening hours on Tuesday, Wednesday, Thursday, Friday and Saturday between 9 am and 1 pm and between 4 pm and 7 pm. Closed Monday and Sunday. From 01/07 to 31/08 Opening hours on Monday and Sunday between 9 am and 1 pm. On Tuesday, Wednesday, Thursday, Friday and Saturday between 9 am and 1 pm and between 4 pm and 7.30 pm. Closed Monday and Sunday. From 01/09 to 31/12 Opening hours on Tuesday, Wednesday, Thursday, Friday and Saturday between 9 am and 1 pm and between 4 pm and 7 pm. Closed Monday and Sunday.

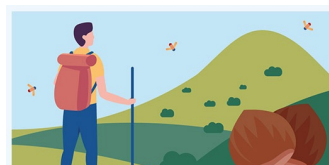
La Saisonneraie – Local store

Local, bulk, organic, handicrafts and a convivial break to build social links. Meetings with producers and artisans.

- 📍 560 bis, allée des Platanes - **Thueyts**
- ☎ **04 75 89 76 41**
- ✉ **lasaisonneraie07@gmail.com**
- 🌐 More information www.otsv.fr/afa5a8



Openings : From 01/01 to 31/12. Closed Monday, Thursday and Sunday. Monday : 4pm to 7pm Tuesday, Wednesday, Friday and Saturday: 9am to 12.30pm / 4pm to 7pm.
Prices : Free access. Product prices directly on site.



L'application est proposée par le Parc naturel régional des Monts d'Ardèche et les offices de tourisme du territoire pour découvrir des magnifiques sentiers, paysages et patrimoines. comprend des randonnées pédestres, équestres, vélos, VTT et même hivernales avec les parcours de ski de randonnée et de raquettes à neige.





Nougat Le Petit Ardéchois

The oldest brand of nougat in the Ardèche, family know-how. Traditional handmade nougats, our speciality with chestnut pieces and Ardèche chestnut tree honey... Free visit and tasting, baking in the morning from 8am to 12pm.



- 📍 1085 Quartier les champs - **Saint-Étienne-de-Fontbellon**
- ☎ **04 75 89 11 79**
- ✉ **lepetitardechois@yahoo.fr**
- 🌐 More information www.otsv.fr/3dbe33

Openings : Open all year round, Monday to Saturday, 9am to 7pm. Closed Sundays and public holidays. Open on Sundays for groups by prior arrangement.

Tartelettes & Co



- 📍 320 chemin de la Garde - **Pont-de-Labeaume**
- ☎ **07 61 41 20 54**
- ✉ **prat.coralie@hotmail.fr**
- 🌐 More information www.otsv.fr/a3186f



Openings : From 01/01 to 31/12. **Prices :** Prices not available.



The Cevenol Market

The cevennes market is a multi services shop situated in the centre of Meyras. Food, regional products, biological fruits and vegetables, tobacco.



- 📍 136 Rue Grande - **Meyras**
- ☎ **06 25 06 90 00**
- ✉ **lemarchecevenol@gmail.com**
- 🌐 More information www.otsv.fr/67cac0

Openings : All year round. Low season: 8.30am-12.30pm / 4pm-7pm High season: 8.30am-1pm / 4pm-7.30pm Closed: Monday, Sunday afternoon and Wednesday afternoon.



Office de Tourisme Sources & Volcans
 2 place du bosquet
 Neyrac-les-Bains
 07380 Meyras

à votre écoute toute l'année

04 75 36 46 26
 tourisme@sourcesvolcans.com
 www.sourcesvolcans.com
 f i y @sourcesetvolcans