



### Aureyre rock

The Rocher d'Aureyre (Aureyre Rock) is located on the heights of the picturesque village of Thueyts. Standing at the top of the hill its overlooking on the valleys will make you fall in love with its unique panorama, it is known as a cosmo-telluric high point...



☎ [04 75 36 46 26](tel:0475364626)

✉ [tourisme@sourcesvolcans.com](mailto:tourisme@sourcesvolcans.com)

🌐 More information [www.otsv.fr/350944](http://www.otsv.fr/350944)

**Openings :** All year round. **Prices :** Free access.

### Barnas' Botanical trail

Created by « les amis de Lafarre » association, the botanical trail invites you to the discovery of local flora. The signage presents you the specificity of the plants and trees.

📍 Place Saint Théophrede - **Barnas**

☎ [04 75 36 40 12](tel:0475364012)

✉ [mairie@barnas.fr](mailto:mairie@barnas.fr)

🌐 More information [www.otsv.fr/fbcd0b](http://www.otsv.fr/fbcd0b)



**Openings :** All year round. **Prices :** Free access.



### Basalt flow in Jaujac

Famous causeways and columns with blue basalt prisms. On the banks of the Lignon, this gigantic flow seems to want to drown us creating impressive gorges looking like organ pipes. It is said to be the most beautiful in Europe.



☎ [04 75 93 22 28](tel:0475932228)

✉ [mairie@jaujac.fr](mailto:mairie@jaujac.fr)

🌐 More information [www.otsv.fr/ca42b0](http://www.otsv.fr/ca42b0)

**Openings :** All year round. **Prices :** Free access.

### Basalt flows of the Amarnier in Meyras

The site of the Amarnier flows allows a relative dating and the study of the different eruptive phases of the Young Volcanoes of Ardèche. It is possible to observe the superposition of the lava flows of Gravenne-de-montpezat and Ray-Pic.

☎ [04 75 36 38 60](tel:0475363860)

✉ [accueil@pnrma.fr](mailto:accueil@pnrma.fr)

🌐 More information [www.otsv.fr/6eb12b](http://www.otsv.fr/6eb12b)



**Openings :** All year round. **Prices :** Free access.



## Basaltic flow in Burzet

The Verdier site located in the heart of the village of Burzet, these basalt flows result from the Ray-Pic, one of the basalt flows in France richest in peridotite nodules. Very nice view of the Bridge.



-  Site du Verdier - **Burzet**
-  **04 75 94 43 91**
-  **contact@burzet.fr**
-  More information [www.otsv.fr/b47664](http://www.otsv.fr/b47664)

**Openings** : All year round. **Prices** : Free access.

## Basaltic flow in Fabras

Famous pavements and colonnades with blue basalt prisms. On the banks of the Lignon, this flow is considered the most beautiful in Europe.

-  **04 75 94 10 76**
-  **fabras@wanadoo.fr**
-  More information [www.otsv.fr/106115](http://www.otsv.fr/106115)



**Openings** : All year round. **Prices** : Free access.



## Bowl of Jaujac volcano

The volcano of the Jaujac Cup takes its name «Cup» of its shape, evoking, it is said, a cup to drink. «It is one of the most regular volcanoes in France, the most perfect even» (Brousse & Berger, 1967, p.3).



-  Domaine de Rochemure - **Jaujac**
-  **04 75 93 22 28**
-  **mairie@jaujac.fr**
-  More information [www.otsv.fr/d3c591](http://www.otsv.fr/d3c591)

**Openings** : All year round. **Prices** : Free access.

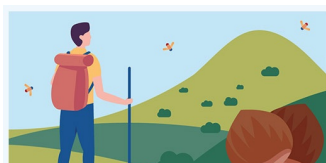
## Carboniferous basin of Prades-Jaujac-La Souche

Coal basin (carbon composition) oriented east-west, twenty kilometers long between La Souche and Lalevade, and a few hundred meters wide at 1200 meters.

-  **04 75 36 38 60**
-  **accueil@pnrma.fr**
-  More information [www.otsv.fr/fe7c78](http://www.otsv.fr/fe7c78)



**Openings** : All year round. **Prices** : Free access.



L'application est proposée par le Parc naturel régional des Monts d'Ardèche et les offices de tourisme du territoire pour découvrir des magnifiques sentiers, paysages et patrimoines. comprend des randonnées pédestres, équestres, vélos, VTT et même hivernales avec les parcours de ski de randonnée et de raquettes à neige.







## Dragonflies' pond

The dragonfly pond is a marsh, a true cradle of biodiversity in the Monts d'Ardèche Geopark: Dragonflies, toads, frogs flourish for the delight of visitors!



📍 Château de Rochemure - **Jaujac**  
☎ **04 75 36 38 60**  
✉ **accueil@pnrma.fr**  
🌐 More information [www.otsv.fr/434c8a](http://www.otsv.fr/434c8a)

**Openings** : All year round. **Prices** : Free access.

## Faysses du moulinage of Chirols

The faysses, terraces or "clos", were used to make crops on several levels in Ardèche. The beans had always been occupied by vines, fruit trees or vegetable plants, they are being rehabilitated today.

☎ **04 75 94 40 11**  
✉ **mairie.chirols@inforoutes.fr**  
🌐 More information [www.otsv.fr/8f1dc7](http://www.otsv.fr/8f1dc7)



**Openings** : All year round. **Prices** : Free access.



## Granite sea or Clapas in La Souche

Large field of granite stones at the foot of Mount Aigu mountain, on the North face. The clapas means a pile of rocky debris, the rocks gather together to form like a sea of granite. Accessible by hiking towards the Mont Aigu.



📍 Chemin des gardes - **La Souche**  
☎ **04 75 37 90 11**  
✉ **contact@lasouche.fr**  
🌐 More information [www.otsv.fr/63e633](http://www.otsv.fr/63e633)

**Openings** : All year round. **Prices** : Free access.

## King's scale

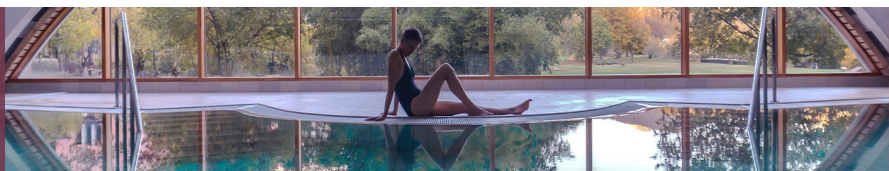
This staircase consists of volcanic stones is located in a natural fault in the basaltic flow of the Causeway Giants. It also allows you to join the village of Thueyts up the climb from the Devil's Bridge.

📍 Place du champ de Mars - **Thueyts**  
☎ **04 75 36 46 26**  
✉ **tourisme@sourcesvolcans.com**  
🌐 More information [www.otsv.fr/4739ae](http://www.otsv.fr/4739ae)



**Openings** : All year round. **Prices** : Free access.

**THERMES**  
**Neyrac-les-Bains**  
Cures thermales  
Spa et bien-être





## La verrerie peat bog

A sensitive natural area, the Burzet glassworks peat bog is a place rich in biodiversity that must be preserved and discovered! Natura 2000 protected area. Managed by the CEN Rhône-Alpes. Home to Henrique Oliveira's work 'Ouroboros'.



- 📍 Lieu-dit "la Brousse" - **Burzet**
- ☎ **04 75 36 38 60**
- ✉ **accueil@pnrma.fr**
- 🌐 More information [www.otsv.fr/5e840c](http://www.otsv.fr/5e840c)

**Openings :** All year round. Subject to favorable weather. **Prices :** Free access.

## Maar Doris

Located on the thermal site of Neyrac-les-Bains, the Maar Doris is an explosion crater. This type of maar is created when a very hot magma (lava) 1200C° meets the water contained in the subsoil several hundred meters deep.

- ☎ **04 75 94 42 40**
- ✉ **contact@meyras.fr**
- 🌐 More information [www.otsv.fr/85130f](http://www.otsv.fr/85130f)



**Openings :** All year round. **Prices :** Free access.



## Mofette of carbon dioxide in Meyras

The Neyrac Mofette is an emanation of carbon dioxide from cooling lava in the subsoil. The site was recently restored by the commune of Meyras. Guided tours are available through the Sources & Volcans tourist office (only in French).



- 📍 300, Ronde du Parc - **Meyras**
- ☎ **04 75 36 46 26**
- ✉ **tourisme@sourcesvolcans.com**
- 🌐 More information [www.otsv.fr/0592f1](http://www.otsv.fr/0592f1)

## Mont Aigu

Mont Aigu is an imposing geological feature marked by impressive scree. Around him, an Integral Biological Reserve was set up by the NFB: it testifies to the presence of an exceptional natural heritage.

- ☎ **04 75 37 90 11**
- ✉ **contact@lasouche.fr**
- 🌐 More information [www.otsv.fr/0dd5af](http://www.otsv.fr/0dd5af)



**Openings :** All year round.



**1 PASS**  
38 expériences  
émervellantes





**3 FORMULES**

- 3 JOURS 48€
- 6 JOURS 60€
- ANNUEL 79€







## Natural sparkling water of Peyralade

The water source of the Peyralade is naturally sparkling ! Visible during a hike on the side «adret», largely sunny.



- 📍 Sentier de Peyralade - Montlaur - **Mayres**
- ☎ **04 75 87 21 38**
- ✉ **mairie@mayres-ardeche.fr**
- 🌐 More information [www.otsv.fr/05b837](http://www.otsv.fr/05b837)

**Openings :** All year round. **Prices :** Free access.

## Pont de Labeaume Basalt flows

The basaltic flows of Pont-de-Labeaume, practically located at the confluence of three valleys, present a major geological attraction on a reduced surface: morphology of the valleys easily decipherable by the superposition of different flows.

- 📍 Le village - **Pont-de-Labeaume**
- ☎ **04 75 38 05 25**
- ✉ **mairie.pontdelabeaume@orange.fr**
- 🌐 More information [www.otsv.fr/bcb596](http://www.otsv.fr/bcb596)



**Openings :** All year round. **Prices :** Free access.



## Queen's scale

The queen's scale is composed of 215 steps stairs cut in the volcanic rock will lead you to the plain of the Vernède, it also allows you to reach the old abandoned village called Fargebelle before descending to the natural site of the Pont du diable.



- 📍 Place du champ de Mars - **Thueyts**
- ☎ **04 75 36 46 26**
- ✉ **tourisme@sourcesvolcans.com**
- 🌐 More information [www.otsv.fr/383fe5](http://www.otsv.fr/383fe5)

**Openings :** All year round. **Prices :** Free access.

## Ray Pic Waterfalls

The waterfalls of the Ray Pic are a natural volcanic site classified since 1931, where the water of the river Bourges gushes in the middle of the basaltic flows on the town of Péreyres. Bathing prohibited

- 📍 Route du Ray Pic - **Péreyres**
- ☎ **04 75 36 46 26**
- ✉ **tourisme@sourcesvolcans.com**
- 🌐 More information [www.otsv.fr/3c5178](http://www.otsv.fr/3c5178)



**Openings :** All year round. **Prices :** Free access.



AGENDA





## Saint Marguerite point of view

The site of Sainte Marguerite (987 m) is located in Chirols. With its chapel, its summit offers a 360° viewpoint from the Tanargue ranges to Mont Ventoux via the Escrinet and the Pre-Alps.



- 📍 Route de Sainte Marguerite - **Chirols**
- ☎ **04 75 94 40 11**
- ✉ [mairie.chirols@inforoutes.fr](mailto:mairie.chirols@inforoutes.fr)
- 🌐 More information [www.otsv.fr/f0f490](http://www.otsv.fr/f0f490)

**Openings :** All year round. **Prices :** Free access.

## Souilhol Volcanic bomb

This is the largest volcanic bomb in the Ardèche's young volcanoes. This bomb (the lip of the Souilhol crater) has a vaguely tapered appearance and probably weighs between seven and ten tonnes. It can be seen on the walk to Souilhol.

- 📍 Hameau du Souilhol - **Meyras**
- ☎ **04 75 94 42 40**
- ✉ [contact@meyras.fr](mailto:contact@meyras.fr)
- 🌐 More information [www.otsv.fr/75da35](http://www.otsv.fr/75da35)



**Openings :** All year round. **Prices :** Free access.



## Souilhol volcano

The volcano of Souilhol and its two flows and the maar Doris, are linked to the last eruptive episode that affected the Bas Vivarais in the town of Meyras and its Young Volcanoes of Ardèche.



- 📍 Route du Souilhol - **Meyras**
- ☎ **04 75 94 42 40**
- ✉ [contact@meyras.fr](mailto:contact@meyras.fr)
- 🌐 More information [www.otsv.fr/5e2230](http://www.otsv.fr/5e2230)

**Openings :** All year round. **Prices :** Free access.

## Tanargue Mountain Range

The Tanargue massif, which culminates at almost 5,000 feet, overlooks the entire Pays Beaume-Drobie. This vast crest of granite which stands out in the landscape takes the name 'Tanargue' from the protohistoric era.

- ☎ **04 75 37 24 48**
- ✉ [contact@cevennes-ardeche.com](mailto:contact@cevennes-ardeche.com)
- 🌐 More information [www.otsv.fr/7a22d3](http://www.otsv.fr/7a22d3)



**Openings :** Throughout the year : open daily.



Partez à l'aventure vers 7 Jeunes Volcans d'Ardèche.

Sur chaque volcan ou à proximité, une borne est implantée ; elle vous permet de poinçonner votre Pass.

Présentez triomphalement votre Pass' avec 7 poinçons dans les Offices de tourisme\* ou à la Maison du Parc à Jaujac et vous vous verrez remettre le prestigieux badge «Explorateur des Jeunes volcans d'Ardèche».







## The “suc” of Bauzon, volcanic cone

The suc de Bauzon, in the town of Montpezat sous Bauzon is a typical strombolian volcanic cone that rises to 1471m.



☎ [04 75 94 41 29](tel:0475944129)

✉ [mairie@montpezatsousbauzon.fr](mailto:mairie@montpezatsousbauzon.fr)

🌐 More information [www.otsv.fr/b44404](http://www.otsv.fr/b44404)

**Openings :** All year round. **Prices :** Free access.

## The Chambon’s maar

The Maar of Chambon is a volcanic explosion crater cut into the base, located a little south of that of the Vestide du Pal and crossed by the Chambon stream. Stone extractions were made to build some houses in the village.

📍 Route du Pal - **Montpezat-sous-Bauzon**

☎ [04 75 94 41 29](tel:0475944129)

✉ [mairie@montpezatsousbauzon.fr](mailto:mairie@montpezatsousbauzon.fr)

🌐 More information [www.otsv.fr/e91415](http://www.otsv.fr/e91415)



**Openings :** All year round. **Prices :** Free access.



## The coal mines in Prades

The former coal mines of Prades tell the industrial history of the Salyndre valley, closely linked to the coal mining of the Prades-Jaujac basin. They are on private land and cannot be visited. Visible from the road.



📍 Mine de Champgontier - **Prades**

☎ [04 75 38 03 11](tel:0475380311)

✉ [prades.mairie@wanadoo.fr](mailto:prades.mairie@wanadoo.fr)

🌐 More information [www.otsv.fr/bcf919](http://www.otsv.fr/bcf919)

**Prices :** Free access. These are located on private land and not accessible to visitors.

## The Féraou gours

Gour Féraou is located in the hamlet of Conges in the town of Mayres, it forms a natural pot at the foot of a waterfall.

📍 Hameau de Conges - **Mayres**

☎ [04 75 87 21 38](tel:0475872138)

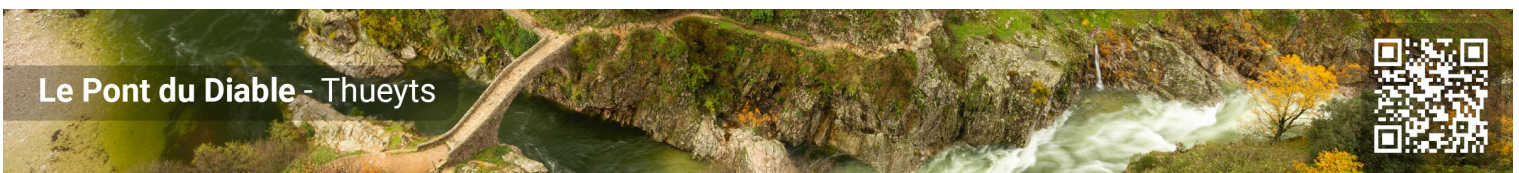
✉ [mairie@mayres-ardeche.fr](mailto:mairie@mayres-ardeche.fr)

🌐 More information [www.otsv.fr/b40bab](http://www.otsv.fr/b40bab)



**Openings :** All year round. **Prices :** Free access.

## Le Pont du Diable - Thueyts





## The Giant's Causeway

The Giant's Causeway is a basalt flow from the Strombolian volcano of Gravenne de Thueyts. It reaches more than 50 m thick and 80 m high, so it is one of the most imposing of the Young Volcanoes of Ardèche and one of the highest in Europe.



- 📍 Le village - **Thueyts**
- ☎ **04 75 36 46 26**
- ✉ [tourisme@sourcesvolcans.com](mailto:tourisme@sourcesvolcans.com)
- 🌐 More information [www.otsv.fr/d1a679](http://www.otsv.fr/d1a679)

**Openings :** All year round. **Prices :** Free access.

## The hell's mouth waterfall

The waterfall of the "Gueule de l'enfer" = Hell's mouth is fed by the brook Merdaric from the village of caracter of Thueyts. If you're lucky, you will only be able to see it after heavy rains. You can observe it along the hiking trail that leads to Devil's Bridge.

☎ **04 75 36 46 26**

✉ [tourisme@sourcesvolcans.com](mailto:tourisme@sourcesvolcans.com)

🌐 More information [www.otsv.fr/e9a523](http://www.otsv.fr/e9a523)



**Openings :** All year round. **Prices :** Free access.



## The hole rock

The holed Rock, "Lou Ron Trooutcha" in Ardèche dialect is a geological feature located in the town of Mayres. The rock is so called because it has a skylight formed in a pile of stones.



- 📍 Sentier de Peyralade - Montlaur - **Mayres**
- ☎ **04 75 87 21 38**
- ✉ [mairie@mayres-ardeche.fr](mailto:mairie@mayres-ardeche.fr)
- 🌐 More information [www.otsv.fr/106cfb](http://www.otsv.fr/106cfb)

**Openings :** All year round. **Prices :** Free access.

## The Peschier water spring

At the bottom of Jaujac's volcano, the Peschier mineral spring was formerly very popular. You can still enjoy its clear, semi-sparkling, ferruginous water on the spot.

📍 Chemin de la Source du Peschier - **Jaujac**

☎ **04 75 36 38 60**

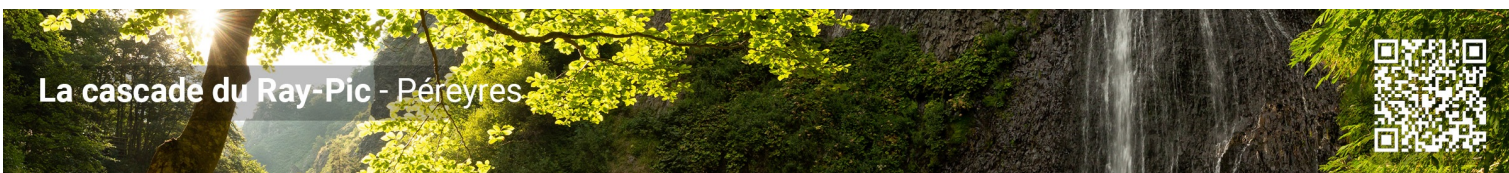
✉ [accueil@pnrma.fr](mailto:accueil@pnrma.fr)

🌐 More information [www.otsv.fr/e4809e](http://www.otsv.fr/e4809e)



**Openings :** All year round.

## La cascade du Ray-Pic - Péreyres







## The Prades coalfield and its mines

The Prades coalfield and its mines form a kind of parallelogram, two kilometers wide, lying about ten kilometers from north-east to south-west, around the communes of Lalevade d'Ardèche and Prades.



☎ [04 75 38 03 11](tel:0475380311)  
✉ [prades.mairie@wanadoo.fr](mailto:prades.mairie@wanadoo.fr)  
🌐 More information [www.otsv.fr/8d708a](http://www.otsv.fr/8d708a)

**Openings :** All year round. **Prices :** Free access. These are located on private land and not accessible to visitors.

## The Rock of Abraham

The Rock of Abraham is a 1,498-metre high peak. It is the highest point between the municipalities of Barnas de La Souche and Mayres in Ardèche.

☎ [04 75 87 21 38](tel:0475872138)  
✉ [mairie@mayres-ardeche.fr](mailto:mairie@mayres-ardeche.fr)  
🌐 More information [www.otsv.fr/a615b8](http://www.otsv.fr/a615b8)



**Openings :** All year round.



## The vestide of the Pal

The Vestide du Pal is a big maar crater of 1700m of diameter and 150m of depth. A succession of basalt alluvial fan created itself inside the crater. It could be the biggest maar crater of Europe.



📍 Souché Le Roux - **Montpezat-sous-Bauzon**  
☎ [04 75 94 41 29](tel:0475944129)  
✉ [mairie@montpezatsousbauzon.fr](mailto:mairie@montpezatsousbauzon.fr)  
🌐 More information [www.otsv.fr/16cc33](http://www.otsv.fr/16cc33)

**Openings :** All year round. **Prices :** Free access.

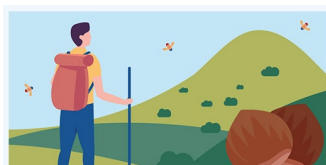
## Volcano : Montpezat's Gravenne

The volcano of Gravenne, Montpezat side is an old Strombolian cone of 806 meters. The flows, emitted by this Strombolian volcano, have all spilled into the Fontaulière valley.

📍 La Gravenne de Montpezat - **Montpezat-sous-Bauzon**  
☎ [04 75 94 41 29](tel:0475944129)  
✉ [mairie@montpezatsousbauzon.fr](mailto:mairie@montpezatsousbauzon.fr)  
🌐 More information [www.otsv.fr/a02827](http://www.otsv.fr/a02827)



**Openings :** All year round. **Prices :** Free access.



L'application est proposée par le Parc naturel régional des Monts d'Ardèche et les offices de tourisme du territoire pour découvrir des magnifiques sentiers, paysages et patrimoines. comprend des randonnées pédestres, équestres, vélos, VTT et même hivernales avec les parcours de ski de randonnée et de raquettes à neige.





## Volcano : The Gravenne of Thueyts

Strombolian volcano (Gravenne), attached to the young volcanoes of Ardèche, the Gravenne de Thueyts is a Strombolian type volcano erupting crater culminating at 600 m. altitude.



📍 Le village - **Thueyts**

☎ **04 75 36 46 26**

✉ **[tourisme@sourcesvolcans.com](mailto:tourisme@sourcesvolcans.com)**

🌐 More information **[www.otsv.fr/5aff0a](http://www.otsv.fr/5aff0a)**

**Openings** : All year round. **Prices** : Free access.



**Office de Tourisme Sources & Volcans**  
2 place du bosquet  
Neyrac-les-Bains  
07380 Meyras

*à votre écoute toute l'année*

**04 75 36 46 26**  
[tourisme@sourcesvolcans.com](mailto:tourisme@sourcesvolcans.com)  
[www.sourcesvolcans.com](http://www.sourcesvolcans.com)  
f @sourcesetvolcans